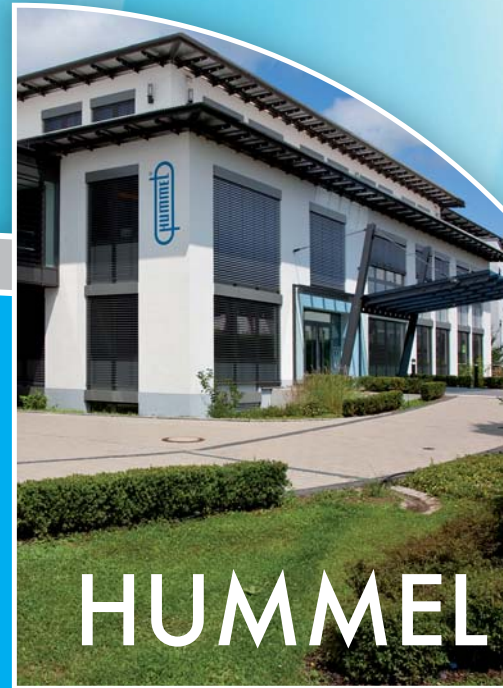


Setting Standards

Medical devices
for ophthalmology



OphthaTOP



HUMMEL

HUMMEL AG Setting Standards



HUMMEL is a globally operating, completely independent family-owned business with a clear commitment to Germany. Numerous patents, innovations, permanent technological advancements, broad range of production capacity, flexibility for special applications and a clear success strategy make HUMMEL to market leader in its industry.

Through our experience and focus we are able to continuously develop with and particularly for our customers new, innovative solutions in order to establish new standards.

Medical device manufacturing combines the HUMMEL know-how in many areas. As a partner of OphthaSWISS AG HUMMEL benefits from modern, patent based measurement and calculation methods and works in close cooperation with renowned scientists as well as clinical and technological research centres.

We deliver certified quality according to the international standards DIN ISO 9001 and EN ISO 13485 and produce according to strict ecological criteria.

www.hummel.com





OphthaTOP

OphthaTOP

OphthaTOP combines diagnostic requirements of various areas of ophthalmology. It is particularly applicable to the field of refractive surgery and in the calculation of intraocular lenses for the cataract surgery.

The easy to use software as well as the guidance while taking an exam will satisfy you using the OphthaTOP. It may demonstrate your patients the benefit of modern treatment methods and special lenses.

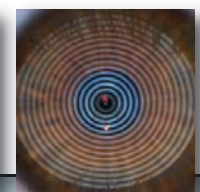
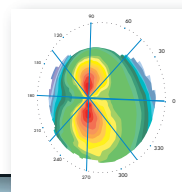
OphthaTOP – Topography

The high-resolution topographic representation provides an ideal support for the evaluation of the corneal surface (e.g. keratoconus, astigmatism) and provides important data for the preparation of refractive surgery.

- Optimised small cone for optimal illumination
- Ring detection: detection of 30 ring edges (10800 measurement points)
- Repeatability calibration sphere: ± 0.05 dpt
- Repeatability normal human cornea: ± 0.15 dpt

Further features:

- Pupil recognition
- Software module to assist in the fitting of contact lenses





OphthaTOP – Raytracing

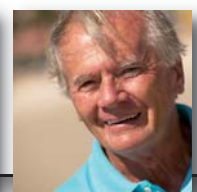
Based on the complete topography and the required biometric data, the precise geometry for an intraocular lens is calculated by raytracing in a virtual eye (e.g. for cataract surgery).

Patent based raytracing for exact intraocular lens calculation:

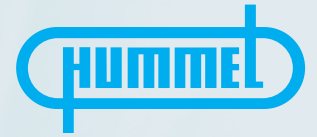
- The exact geometrical optic is used for the calculation
- It does not use approximation formulae
- The calculation is based on real topography to 9 mm in diameter
- The exact geometrical data of the intraocular lens are used in the calculation

OphthaTOP – Highlights

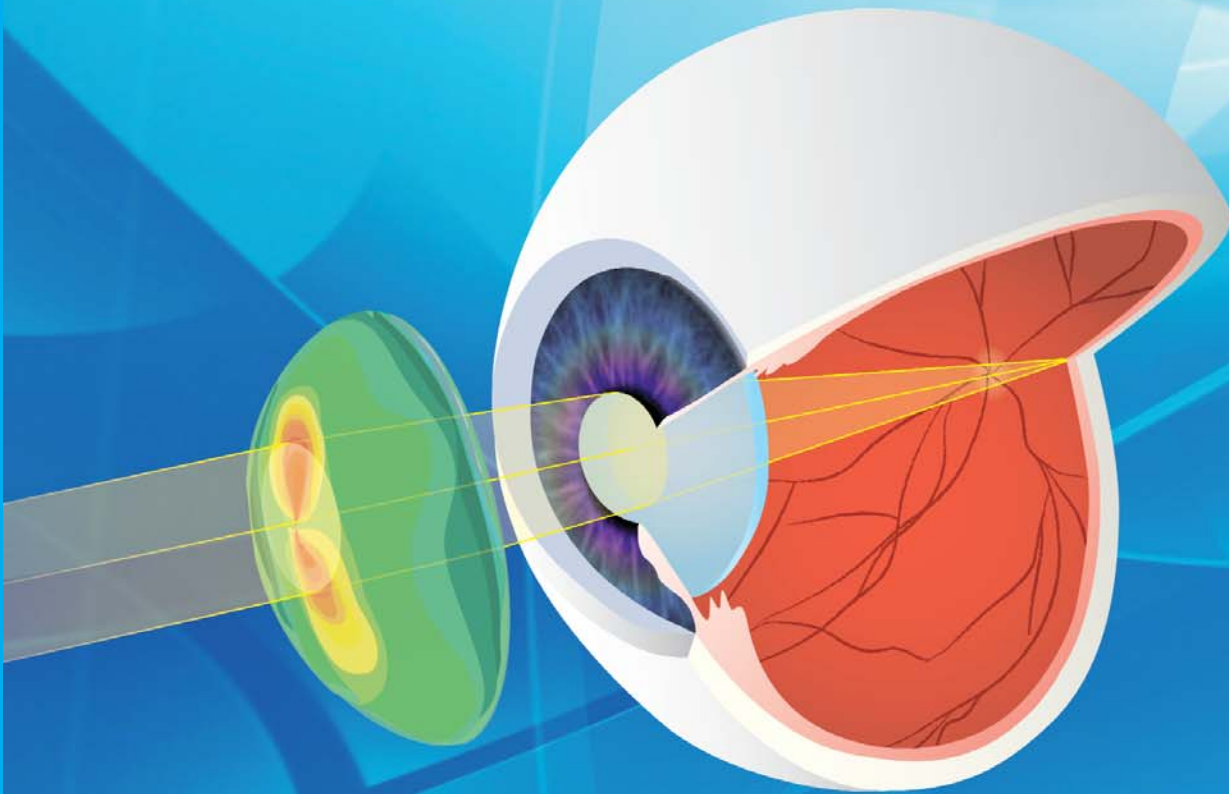
- Exact lens calculation for:
 - ✓ Standard eyes
 - ✓ Refractive treated eyes (PRK / LASIK)
 - ✓ Long and short eyes
 - ✓ Complex special lenses (aspheric / toric / customized)
- Auto capture
- Visual presentation of the results with a selected lens
- Prediction of wavefront aberration with a specific lens
- Real representation of the topography without smoothing
- Assistance in documenting the diagnosis



RAYTRACING



- Standard eyes
- Refractive treated eyes (PRK/LASIK)
- Long and short eyes
- Special IOLs (toric/aspheric/customized)



IOL calculation



you'll see

HUMMEL AG

Division MT
Lise-Meitner-Straße 2
79211 Denzlingen
Germany

Tel. +49 (0)76 66 / 9 11 10-0
Fax +49 (0)76 66 / 9 11 10-20
E-Mail info.mt@hummel.com

HUMMEL AG

Lise-Meitner-Straße 2
79211 Denzlingen
Germany
www.hummel.com

