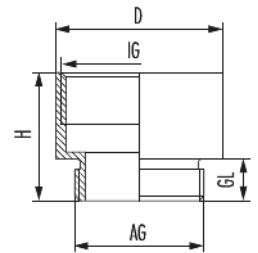


Extension E-Ms

Item number 1033202550



Technical data

Material	Nickel-plated brass
Tightening torque	8 Nm
Variant	Metric
External thread (AG)	M20 x 1,5
Internal thread (IG)	M25 x 1,5
Thread length (GL)	6.5 mm
Height (H)	19 mm
D	27 mm



Extension E-Ms

Item number 1033202550

Commercial data

Packaging Unit	50
EAN code	4033878400289
Weight	0.02037 kg
ETIM 7	EC000938
ETIM 8	EC000938
ETIM 9	EC000938
eCl@ss 10.1	27-14-44-32
Customs tariff number	74122000

Note:

