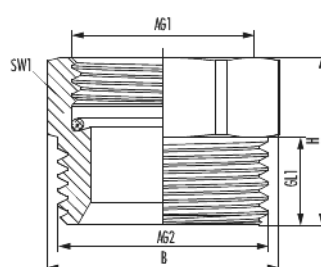
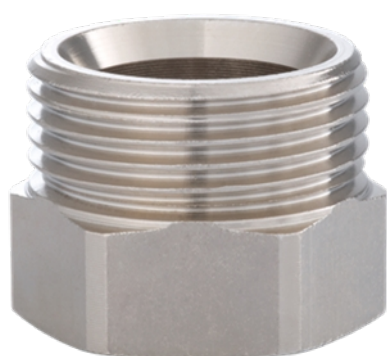


# Reduction with internal thread

Item number 2254583401



## Technical data

Connection size 1 (AG1)	G 5/8
Connection size 2 (AG2)	G 3/4
Connection type 1 (AT1)	Internal thread
Connection type 2 (AT2)	Euro cone
Length (L)	29 mm
Width (B)	29 mm
Height (H)	21 mm
Thread Length 1 (GL1)	11 mm
Wrench size 1 (SW1)	26 mm
Suitable for	Euro cone
Mounting form	Straight-type
Material	Nickel-plated brass
Material moulded seal	EPDM
Material body	Nickel-plated brass
Max. operating pressure	10 bar

# Reduction with internal thread

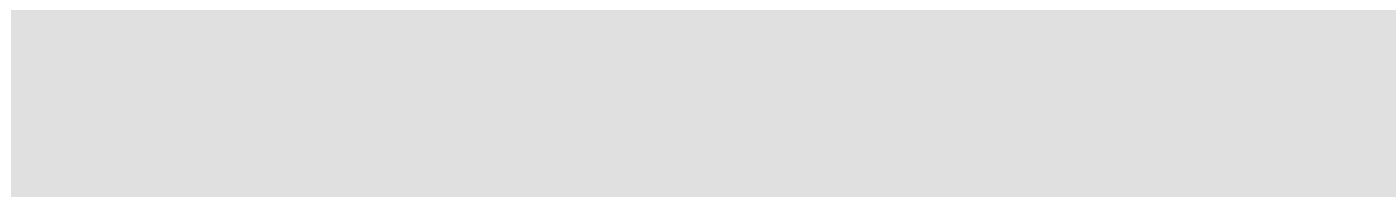
Item number 2254583401

**Max. operating temperature  
heating** 120 °C

## Commercial data

<b>Packaging Unit</b>	20
<b>EAN code</b>	4033878206850
<b>Weight</b>	0.03851 kg
<b>ETIM 7</b>	EC003024
<b>ETIM 8</b>	EC003024
<b>ETIM 9</b>	EC003024
<b>eCl@ss 10.1</b>	22-56-92-90
<b>Customs tariff number</b>	84818039

Note:



# Reduction with internal thread

Item number 2254583401