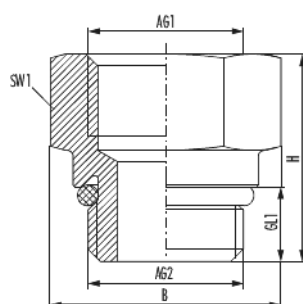


Transition piece

Item number 2550341001



Technical data

Connection size 1 (AG1)	G 1
Connection size 2 (AG2)	G 3/4
Connection type 1 (AT1)	Internal thread
Connection type 2 (AT2)	External thread
Length (L)	41.6 mm
Width (B)	41.6 mm
Height (H)	28.5 mm
Thread Length 1 (GL1)	10 mm
Wrench size 1 (SW1)	36 mm
Mounting form	Straight-type
Material	Nickel-plated brass
Material moulded seal	EPDM
Material body	Nickel-plated brass
Max. operating pressure	10 bar

Transition piece

Item number 2550341001

**Max. operating temperature
heating** 120 °C

Commercial data

Packaging Unit	25
EAN code	4033878101438
Weight	0.0829 kg
ETIM 7	EC003024
ETIM 8	EC003024
ETIM 9	EC003024
eCl@ss 10.1	22-56-92-90
Customs tariff number	84818039

Note:

Transition piece

Item number 2550341001