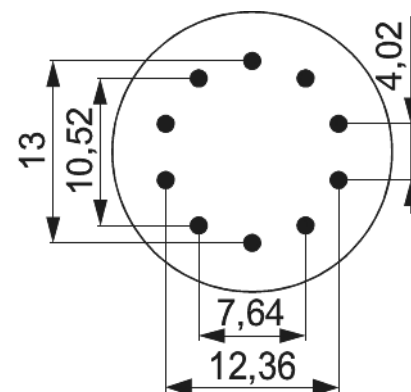
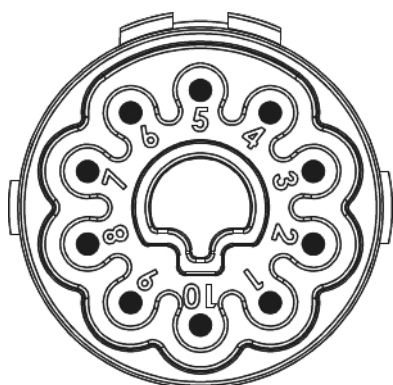


# Contact insert M23 Power - 10-pole

Item number 7084910101



## Technical data

Characteristic of connection	Crimp
Number of poles	10
Pole picture	10
Insert	Pin
Color contact insert	blue
Material insulating body	PA 6 , PBT
Number of contacts signal	10
Contact-Ø signal	1 mm
Terminal cross section signal	0,14 - 1,5 mm <sup>2</sup>
Terminal cross section power	0,75 - 4 mm <sup>2</sup>
Nominal current signal	10 A
Nominal voltage at degree of pollution 3 signal	160 V <sup>~</sup>
Test voltage signal	2500 V <sup>~</sup>
Test voltage power	4000 V <sup>~</sup>
Insulation resistance signal	> 10 <sup>13</sup>

# Contact insert M23 Power - 10-pole

Item number 7084910101

<b>max. contact resistance signal</b>	3 mOhm
<b>max. contact resistance power</b>	3 mOhm
<b>Temperature range</b>	-40°C to +125°C
<b>Degree of Protection</b>	3
<b>Flammability</b>	V-0 (UL 94)
<b>Suitable Signal contacts</b>	7010941001 , 7010941021

# Contact insert M23 Power - 10-pole

Item number 7084910101

## Commercial data

Packaging Unit	25
EAN code	4033878502778
Weight	0.006 kg
ETIM 7	EC003557
ETIM 8	EC003557
ETIM 9	EC003557
eCl@ss 10.1	27440223
Customs tariff number	85472000

Note:

