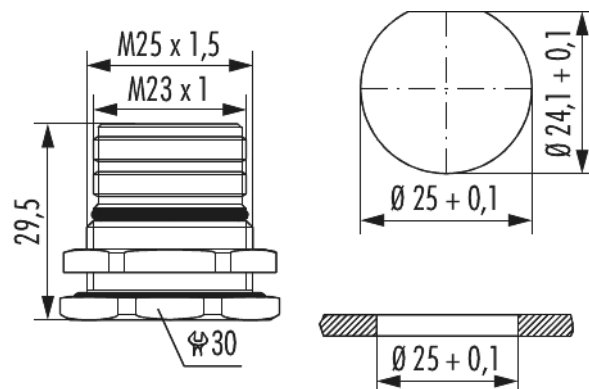


Housing panel connector M23 Signal rear wall

Item number 7458000000



Technical data

Material housing	Copper-Zinc alloy
Material housing surface	Nickel
Installation type	Rear wall
Version	TWILOCK
External thread (AG)	M25 x 1,5
External thread plug-in side	M23 x 1
Locking type	Screw
Shield	unshielded
Seal type	O-Ring
Material seals/o-rings	NBR
Coding position	
Panel hole	Ø 25 + 0,1 mm
Drill form	D 24,1 + 0,1 mm, D Ø 25 + 0,1 mm
Flange	- mm
Length (L)	29.5 mm
Allen key/Torx	-



Housing panel connector M23 Signal rear wall

Item number 7458000000

Wrench size (SW)	30 mm
Protection class	IP 67 , IP 69 K
Temperature range	-40° C to +125° C

Housing panel connector M23 Signal rear wall

Item number 7458000000

Commercial data

Packaging Unit	25
EAN code	4033878503652
Weight	0.04828 kg
ETIM 7	EC003556
ETIM 8	EC003556
ETIM 9	EC003556
eCl@ss 10.1	27440224
Customs tariff number	85366990

Note:

