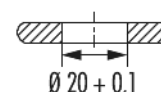
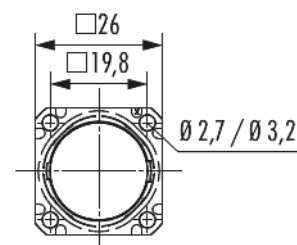
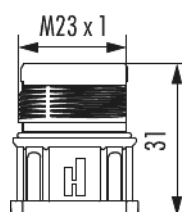


Housing panel connector M23 Power

Item number 7601000000



Technical data

Material housing	brass , Zinc Die Cast
Material housing surface	Nickel
Installation type	Front wall
External thread plug-in side	M23 x 1
Locking type	Screw
Shield	unshielded
Seal type	O-Ring
Material seals/o-rings	FKM (FPM) , NBR
Panel hole	Ø 20 + 0,1 mm
Flange	26 x 26 mm
Hole distance	19.8 mm
Hole diameter	4 x Ø 3,2 mm
Length (L)	31 mm
Protection class	IP 67 , IP 69 K
Temperature range	-40 °C to +125 °C



Housing panel connector M23 Power

Item number 760100000

suitable contact inserts

7084909101 , 7084909102 , 7084910101 , 7084910102 ,
7084943121 , 7084943122 , 7084944101 , 7084944102 ,
7084951121 , 7084951122 , 7084953101 , 7084953102



Housing panel connector M23 Power

Item number 7601000000

Commercial data

Packaging Unit	25
EAN code	4033878504048
Weight	0.0216 kg
ETIM 7	EC003556
ETIM 8	EC003556
ETIM 9	EC003556
eCl@ss 10.1	27440224
Customs tariff number	85366990

Note:

