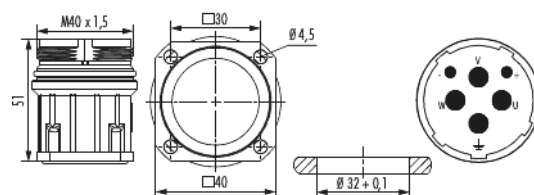


Housing incl. insert panel connector M40

Power - 6-pole

Item number 7740023000



Technical data

Material housing	Zinc Die Cast
Material housing surface	Nickel
Insert	Pin
Installation type	Front wall
Version	for pin inserts
External thread plug-in side	M40 x 1,5
Locking type	Screw
Shield	unshielded
Seal type	O-Ring
Material seals/o-rings	FKM (FPM) , NBR
Panel hole	Ø 32 + 0,1 mm
Flange	40 x 40 mm
Hole distance	30 mm
Hole diameter	4 x Ø 4,5 mm
Length (L)	51 mm
Temperature range	-40°C to +125°C



Housing incl. insert panel connector M40

Power - 6-pole

Item number 7740023000

Degree of Protection	3
Protection class	IP 67 , IP 69 K
Characteristic of connection	Crimp
Number of poles	6
Pole picture	2 + 3 + PE
Color contact insert	blue
Material insulating body	PBT
Number of contacts signal	2
Number of contacts power	3
Number of contacts PE	1
Contact-Ø signal	2 mm
Contact-Ø power	3.6 mm
Terminal cross section signal	0,14 - 1,5 mm ²
Terminal cross section power	2,5 - 16 mm ²
Crimp range	0.14 - 16 mm ²
Nominal current signal	28 A
Nominal current power	55 A
Nominal voltage at degree of pollution 3 signal	300 V [~]
Nominal voltage at degree of pollution 3 power	600 V [~]
Test voltage signal	2500 V [~]
Test voltage power	4000 V [~]
Insulation resistance signal	> 10 ¹³
Insulation resistance power	> 10 ¹³



Housing incl. insert panel connector M40

Power - 6-pole

Item number 7740023000

max. contact resistance signal	3 mOhm
max. contact resistance power	1 mOhm
Minimum mating cycles	> 500
Suitable Signal contacts	7015952001
Suitable power contacts	7015953601 , 7015953611 , 7015953621 , 7015953622 , 7015953631
Suitable PE-/FE-contacts	7015953601 , 7015953611 , 7015953621 , 7015953623 , 7015953631



Housing incl. insert panel connector M40

Power - 6-pole

Item number 7740023000

Commercial data

Packaging Unit	5
EAN code	4033878504505
Weight	0.1714 kg
ETIM 7	EC002635
ETIM 8	EC002635
ETIM 9	EC002635
eCl@ss 10.1	27440102
Customs tariff number	85366990

Note:

