

QUADRO VALVE TERMINAL BLOCK



THE FLEXIBLE CONNECTION FITTING SET FOR RADIATORS

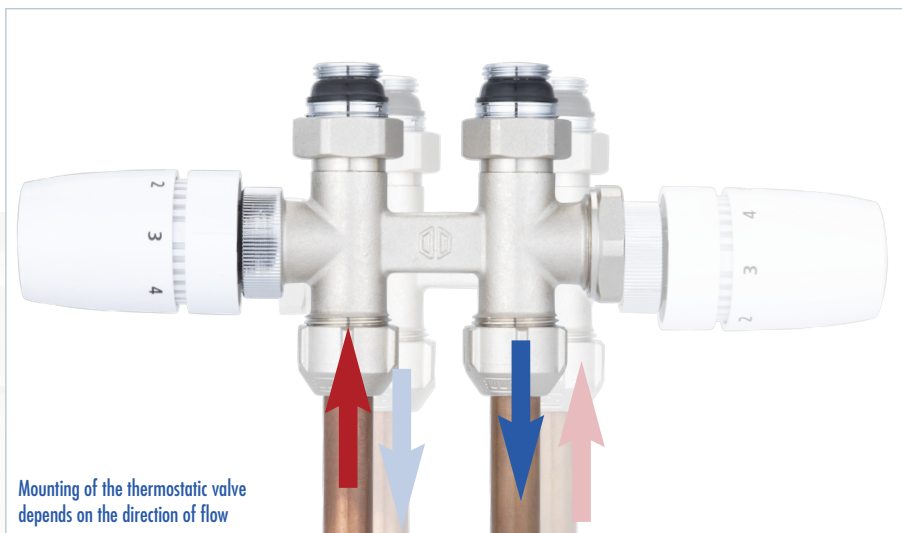
One terminal block, four connections

Corner or straight type with thermostatic valve left or right

It doesn't get any more flexible than this: the Quadro valve terminal block can be installed in either as corner or straight type. This makes it irrelevant whether the pipe connections come from the floor or the wall - the Quadro is the right solution in any case.

What's more: the thermostatic valve included in the scope of delivery can also be mounted on the left or right side. This means that the Quadro can be flexibly adapted to the direction of flow. The flow is always on the thermostat side.

- // Ideal for radiators with centre connection
- // Designed for two-pipe heating systems
- // Can be used as corner or straight type
- // Mounting of the thermostatic valve on the left or right
- // Presettable valves for hydraulic balancing



Two-pipe connection set

Quadro valve terminal block with thermostatic valve and cover cap, chrome, white or black



Version	Item No.
chrome, with 2 nipples G 1/2 x G 3/4	2 219 8412 02
white, with 2 nipples G 1/2 x G 3/4	2 219 8412 90
black, with 2 nipples G 1/2 x G 3/4	2 219 8412 05

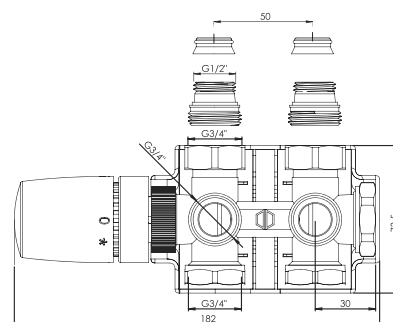
Technical data

Operating temperature:	up to 90 °C
Operating pressure:	10 bar

Material data

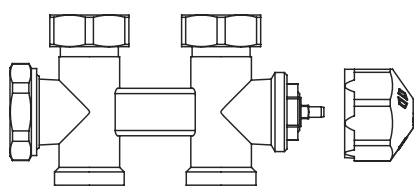
Body / union nut:	nickel-plated brass
Moulded seal:	EPDM / Teflon
Connection nipple:	brass blank
Cone insert:	PA

- // Valve terminal block with thermostatic valve and cover cap
- // For two-pipe systems in corner or straight form
- // For pipe connection to the wall or perpendicular to the floor
- // The thermostatic valve can be mounted on the left or right side
- // Thermostatic valve bonnet and shut-off bonnet can be interchanged
- // The flow must always be connected on the side of the thermostatic sensor



A terminal block
that always fits

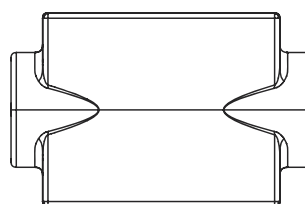
Quadro valve terminal block



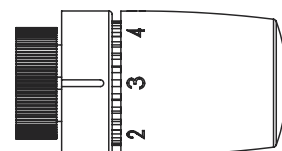
Terminal block



Cone inserts / nipples

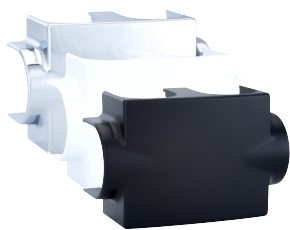


Cover cap (chrome-plated, white or black)



Thermostatic head (chrome-plated, white or black)

Cover for Quadro valve terminal block

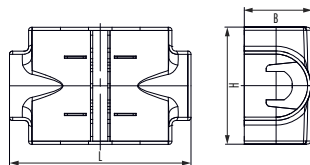


// Cover for Quadro valve terminal block

TECHNICAL DATA

Material:

ABS

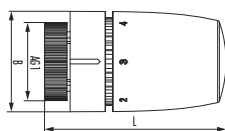


L mm	B mm	H mm	Colour	Item-No
114	42,6	73,5	chrome	2 219 8400 02
114	42,6	73,5	black	2 219 8400 05
114	42,6	73,5	white	2 219 8400 90

Thermostatic heads M30 x 1,5



// Solids sensor
// Zero setting
// Temperature limit



TECHNICAL DATA

Material thermostatic head	ABS / PA
Material union nut	Nickel-plated brass/ Coated brass
Frost protection	Yes
Position 0	Radiator closed
Position 1-5	limited at respective temperature setting
Control range	8 – 28 °C
max. Sensor temperature	50 °C

AG1	L mm	B mm	Colour	Item-No
M30 x 1,5	76	42,5	chrome	2 907 0001 02
M30 x 1,5	76	42,5	white	2 907 0001 90
M30 x 1,5	76	42,5	black	2 907 0001 05

Valve insert (Spare part)



// continuously adjustable valve terminal block Quadro

Item-No
DAT1-QVS001

www.hummel.com

HUMMEL AG
Lise-Meitner-Straße 2
79211 Denzlingen
Germany
www.hummel.com

Tel. +49 (0) 76 66 / 9 11 10-400
Fax +49 (0) 76 66 / 9 11 10-94 20
E-Mail plh@hummel.com

