

RAILWAY SECTOR



APPLICATIONS AND REFERENCES

HUMMEL solutions for the railway sector

HUMMEL products are established in the railway sector. The cable glands and circular connectors can be found in track systems, in signaling and also on rail vehicles. With EN 45545-2 certification, these components meet all requirements for applications in infrastructure as well as on, under or on top of rail vehicles. In addition, the VariaPro Rail cable gland meets the requirements of the stricter EN 45545-3 and can therefore also be used in passenger compartments of rail vehicles.

RAIL CONTROL

1 Railway Tracks



HSK-M are used for applications in security control systems

JAEGER Standard Connectors are inside control boxes for signaling, switches and rail gates

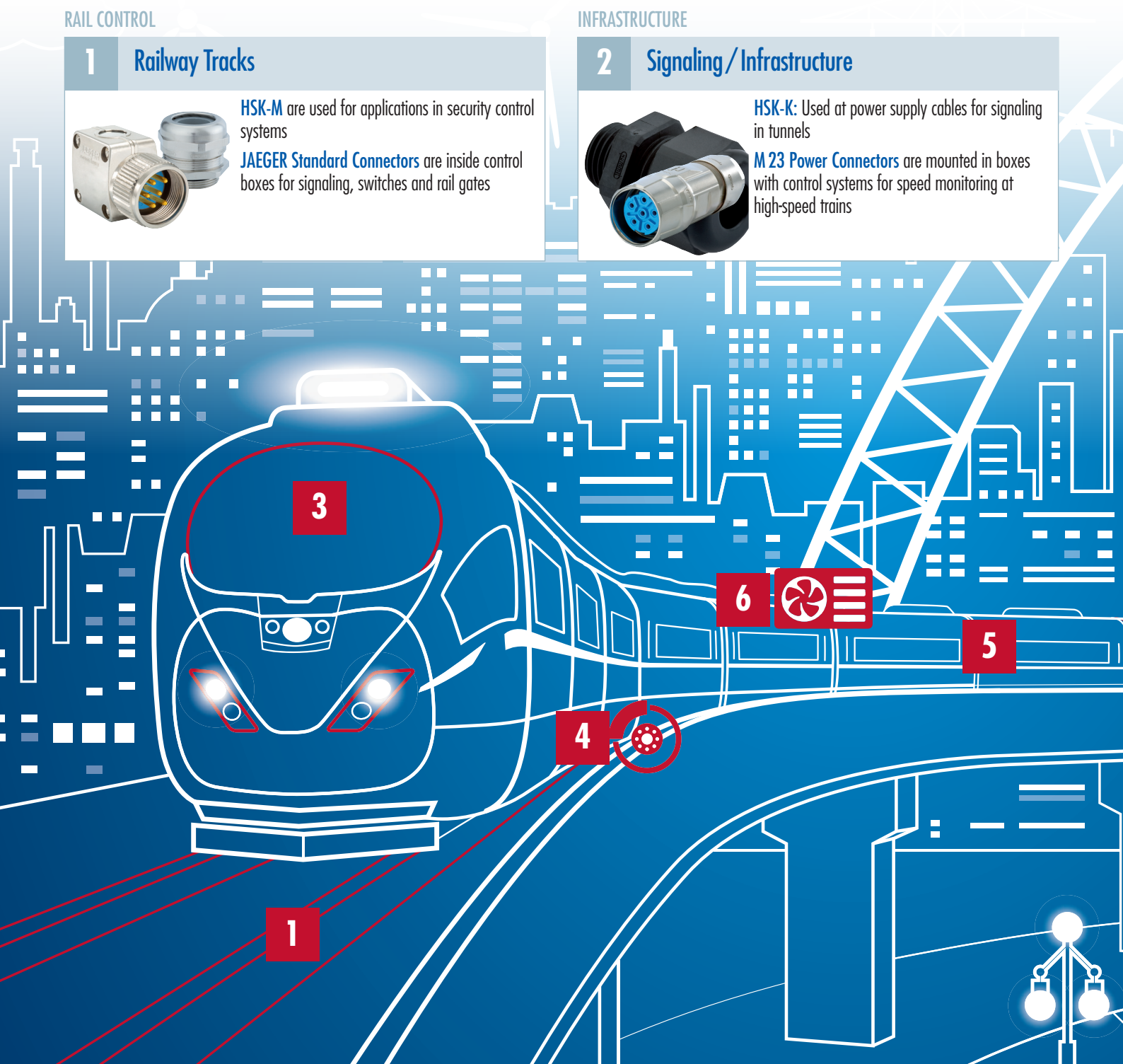
INFRASTRUCTURE

2 Signaling / Infrastructure



HSK-K: Used at power supply cables for signaling in tunnels

M 23 Power Connectors are mounted in boxes with control systems for speed monitoring at high-speed trains



RAIL VEHICLES

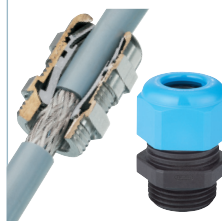
3 Locomotive / Railcar



HSK-M-W is fixing the power cable from the lighting system in high-speed trains

M 23 Power Connectors are transmitting the power for industrial ethernet switch boxes

4 Braking and Traction Systems



HSK-K-Ex-Active fixes the power supply and sensor cables for the braking system below the carriage

HSK-M-EMV-D Cable Glands are protecting and fixing the power cables for traction systems

5 Cabling, Ventilation and Control Systems



HSK-MZ is used for fixing the power and signal cabling between the carriages. It is installed below the floor of the cabins.

HSK-INOX-PVDF works reliably in a high temperature application for speed monitoring at the wheels.

6 Air condition and Monitoring



HSK-M: Fixing the signal and power supply cables for the air condition, the ventilation and for monitoring systems.

7 Door Systems



M 16 Connectors are transmitting power and signals for opening and closing the doors and also for automatic counting systems.

Others



M23 Signal Connectors are used in platform security doors for passengers

HSK-M Cable Glands are installed in the restrooms of trains at the signal connection for water level and smoking sensors.

References:

ALSTOM
Designing fluidity

Ansaldo STS
A Finmeccanica Company

AAL
Autometers Alliance Ltd

BHEL

SCHALTBAU
BODE

BOMBARDIER

中国中车
CRRC

ESJM

Faiveley
TRANSPORT

mermec
AN ANGEL COMPANY

SIEMENS
Ingenuity for life

ŠKODA

KNORR-BREMSE

MEDHA

SNCF

SONGZ

STADLER

ELECTRIC COMPONENTS

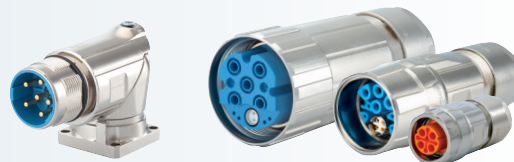
Cable Glands

Polyamide-, Brass- and Stainless steel,
EMC-connections, Protection Ex e, Ex d, Ex ta



Circular Connectors

M 12 Power to M 40, INOX, TWILOCK, Industrial Ethernet,
Power, Signal, Hybrid-Connector, Moulded Cordsets



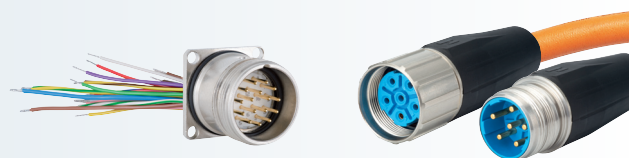
Conduit Systems

Corrugated Conduit Systems, Conduit Cable Glands,
combined Cable Glands, Accessories



Cable Assembly

Moulded Signal- and Power Circular Connectors,
Servo Cables, Cable Sets



www.hummel.com

HUMMEL AG
Lise-Meitner-Straße 2
79211 Denzlingen
Germany
www.hummel.com

Tel. +49 (0) 76 66 / 9 11 10-0
Fax +49 (0) 76 66 / 9 11 10-20
E-Mail info@hummel.com

