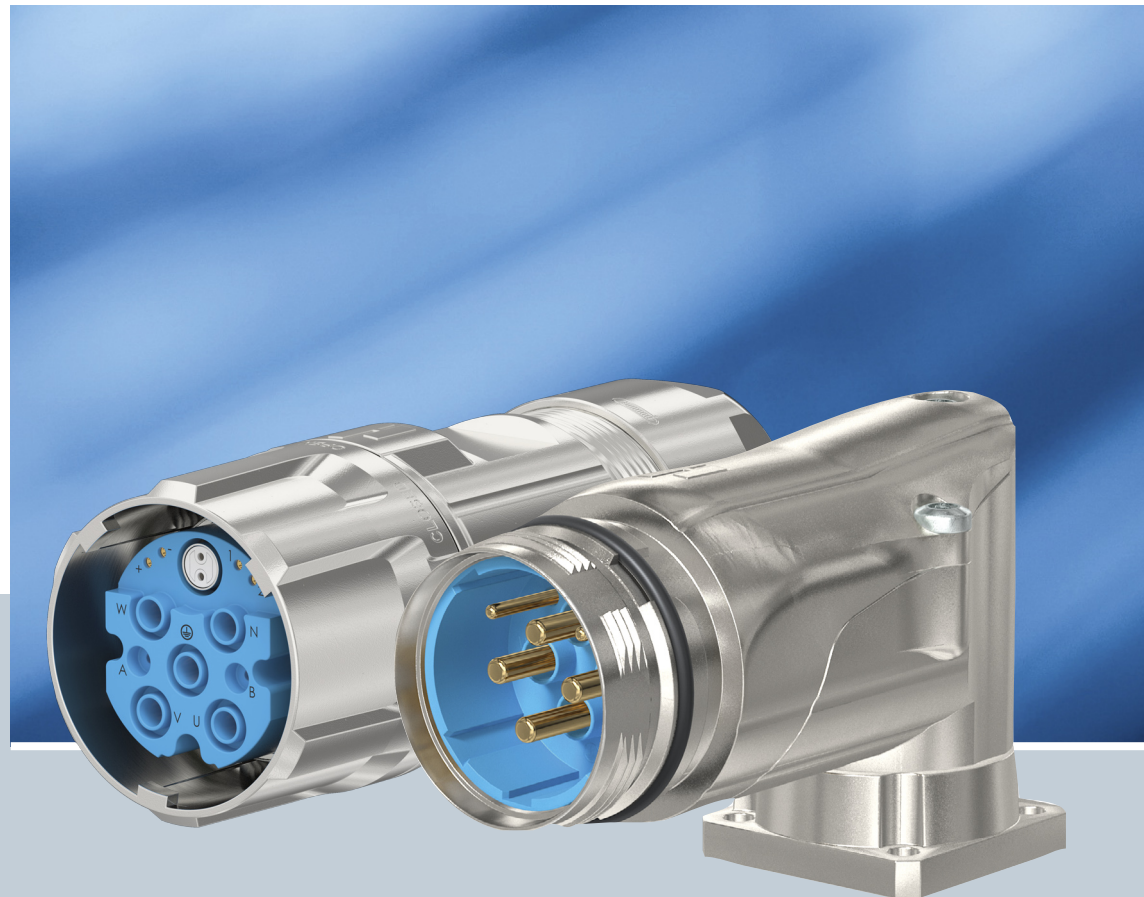


CIRCULAR CONNECTORS M40

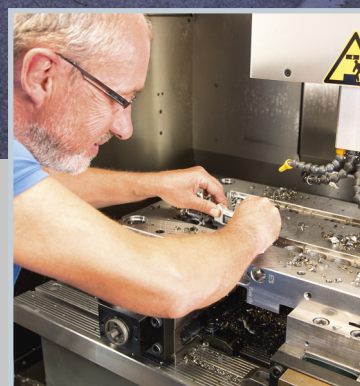


POWER // HYBRID





HUMMEL AG is a renowned manufacturer of connection technology and components for electric and heating areas. The medium sized family business stands for quality, precision, reliability and pronounced service consciousness. A wide vertical range of manufacture with in-house development, construction, toolmaking, manufacturing, electroplating and assembling from a single source, offers best conditions for implementing individual solutions.

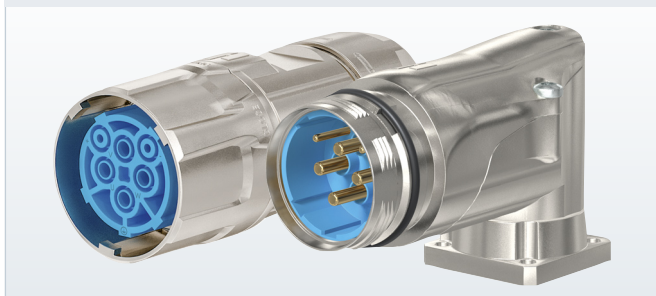


connections

TABLE OF CONTENT

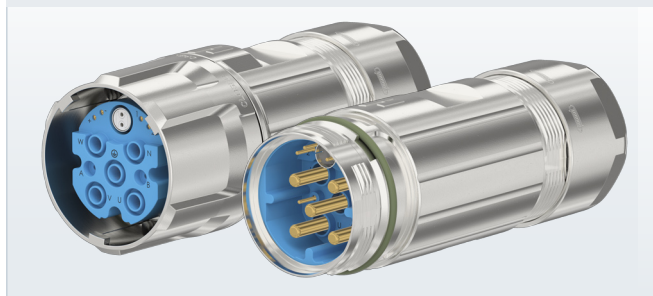
Connectors M 40 Power (Size 1,5)

► 9



Connectors M 40 (Size 1,5) Hybrid

► 21



HUMMEL Highlights: product features

► 6/23

Technical Information

► 8

HUMMEL International

► 27

Limited Liability

Products, design, colors and dimensions are subject to change without prior notice. We reserve the right to make technical improvements on all our products, currently ordered or for future orders. It is the users responsibility to verify all dimensions and technical data. HUMMEL AG will assume no liability regarding information provided to the user by published literature or inside technical staff, its distributors and outside sales personnel. Errors in the catalog can occur and shall not create any liability whatsoever for HUMMEL AG. All information provided by HUMMEL AG is without guarantee and must be verified by the user.

Imprint

Graphic & Layout:

HUMMEL AG, Marketing & Communications, Lise-Meitner-Str. 2, 79211 Denzlingen, Germany, Tel. +49 (0) 76 66 9 11 10-0, Fax +49 (0) 76 66 9 11 10-20, info@hummel.com

Printer:

Druckerei Furtwängler GmbH, 79211 Denzlingen, Germany, Tel. +49 (0) 76 66 / 13 31. Printed on recycled paper in July 2024.



Housing



Inserts / Pinouts



Contacts



Accessories

Further information can be found in our Technical Centre at www.hummel.com

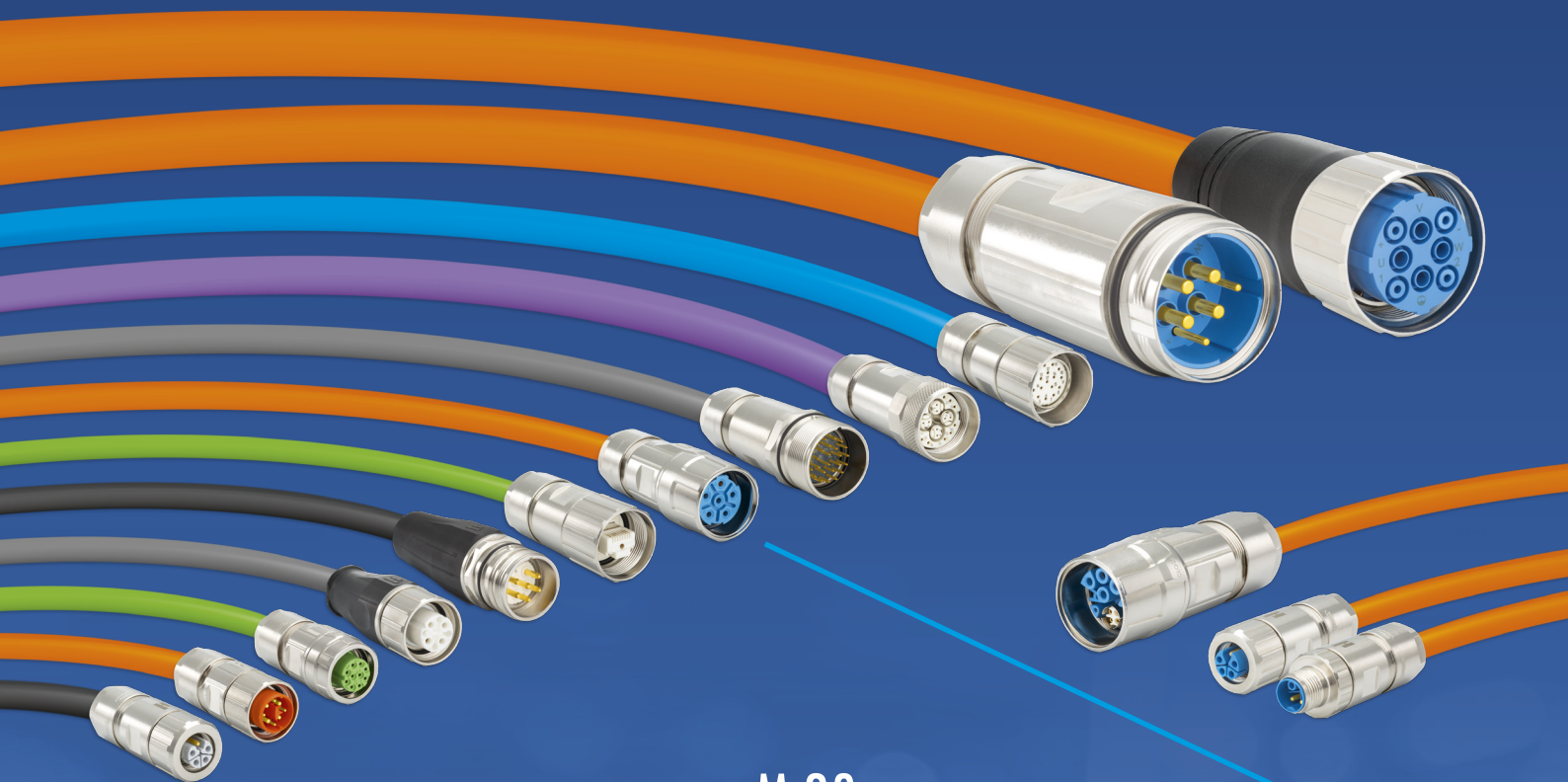


- // Assembly instructions
- // Crimping, assembly, disassembly
- // Crimping tool instructions for use
- // Crimp settings
- // Coding
- // Certificates & approvals
- // Derating curves

<https://www.hummel.com/en/circular-connectors/technical-center>



HUGE RANGE: M 12 – M 40



M 12 Power

M 23

Signal Connectors

Power Connectors

CIRCULAR CONNECTORS

PROFINET

Customized Solutions

Industrial Ethernet

M 16

M 23 RJ 45

M 40

M 23 Hybrid

TWILOCK

Moulded Cordsets



RoHS

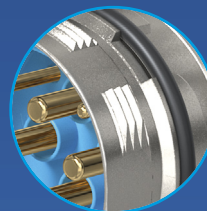
File-No. E 213337

Germanischer Lloyd

- // Quick Connect
- // Multi functional: Ideal with TWILOCK and screw connection
- // Easy handling, exceptional functionality
- // Resistant to vibration



Clearly defined:
OPEN – CLOSE



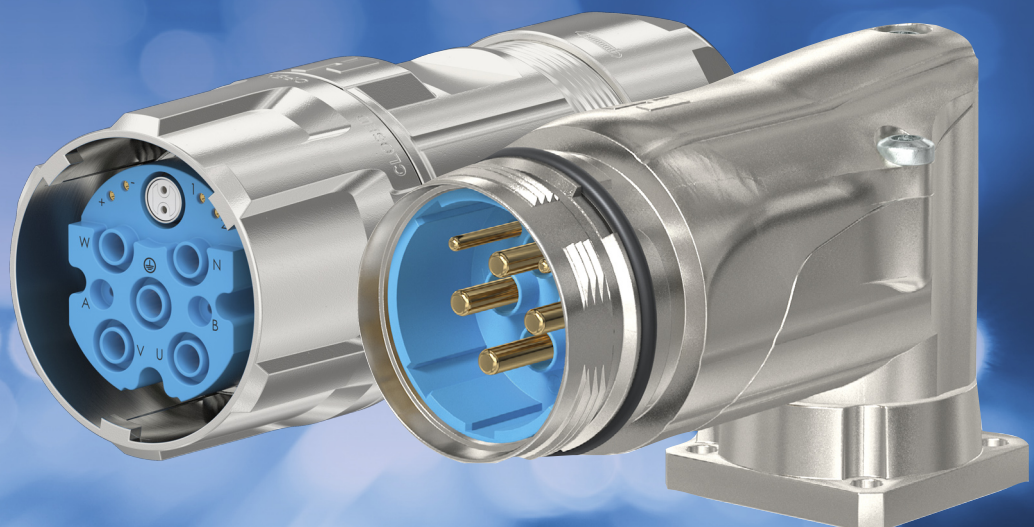
Multi functional: Special thread
allows use of TWILOCK-S and
screw connection



Locking with a slight rotation
or release of the connection



intermateable with SpeedTec



Rated current

The **rated current** is the current that each contact of a connection can simultaneously transfer continuously.

Rated voltage

The **rated voltage** is the voltage for which a connector is designed. In operation, the rated voltage is the maximum continuously applied voltage.

Functional earth (FE)

Functional earth is an electrical conductor to ensure the functions and thus normal operation of installations and devices.

Functional earthing conductor: Earthing conductor provided for functional earthing.

Functional earthing: Earthing a point or points in a system or in an installation or in equipment, for purposes other than electrical safety.

Protective earth (PE)

Protective earth is an electrical conductor provided for the purposes of safety, for protection against electric shock. It is also called an earth conductor, earthing or "earth" for short. Its task in electric systems is to protect living beings in case of a fault.

PE conductor: Protective earth for the purposes of protective earthing

Protective earthing: Earthing a point or points in a system or in an installation or in equipment for purposes of electrical safety.

Contact overlapping

The **contact overlapping** or wipe length of connectors generally denotes the possible overlap area of the pin and receptacle. The greater this area, the more reliable the connection is due to higher possible tolerance allowance (tolerance compensation).

To ensure the IP degree of protection and the necessary contact overlapping, at HUMMEL the cable and coupling connectors must be fully engaged and locked.

Test voltage

The **test voltage** is the voltage that a connector must withstand under certain specifications without flashover or disruptive discharge via or through the insulation and at least corresponds to the r.m.s. withstand voltage in EN 61984.

The value of the test voltage is higher than the rated withstand voltage and serves to verify the dielectric strength of the connector.

Connectors

Connectors that are designed to be engaged or disengaged in normal use when live or under load. These are also called connectors with breaking capacity (CBC). A classic example in households is the SCHUKO plug (earthed 2-pin plug).

Connectors that are not deemed to be engaged or disengaged in normal use when under load or live are also named COC (connectors without breaking capacity).

HUMMEL connectors are usually classified as COC, i.e. they may not be engaged or disengaged when live!

Mating Cycles

One insertion and withdrawal (engaging and disengaging) of connectors is called a mating cycle (also called a cycle of mechanical operation or engaging cycle). The number of mating cycles is an important characteristic for connectors and plugs. It defines the life of a connector during which there is no loss in its transfer/transmission quality. The number of mating cycles is influenced above all by the quality of the contact surface. Use of high-quality and durable contact coatings reduces surface abrasion on mating.

Pollution degree

The **pollution degree** is a numerical value that indicates the level of pollution expected in the micro-environment and is a parameter used in the design of clearances and creepage distances of electrical equipment. It denotes the potential pollution of an open, unengaged connector in a specific environment. The EN 60664-1 standard differentiates between four categories:

- **Pollution degree 1:** No pollution or only dry, non-conductive pollution occurs. The pollution has no influence.
- **Pollution degree 2:** Only non-conductive pollution occurs. Occasionally, however, a temporary conductivity caused by condensation must be expected. (typical for households, business premises, laboratories or test areas.)
- **Pollution degree 3:** Conductive pollution occurs or dry non-conductive pollution occurs, which becomes conductive due to condensation which is to be expected. (typical for industrial firms or workshops.)
- **Pollution degree 4:** Continuous conductivity occurs due to conductive dust, rain or other wet conditions. If connectors are used under a higher pollution degree, the voltage values must be reduced. Contact our technical specialists to find out more.

Safety note

In case of operating voltages greater than 50 volt, the connectors listed in this catalogue must be used with conducting housing parts in accordance with the safety provisions of DIN VDE 0100-410; IEC 60364-4-41. These safety provisions specify that relevant connectors may not be engaged or disengaged when live. Otherwise, no protection against electric shock is ensured.



Further information is available on our website:

<https://www.hummel.com/de/rundsteckverbinder/technik-center/allgemeine-technische-hinweise>

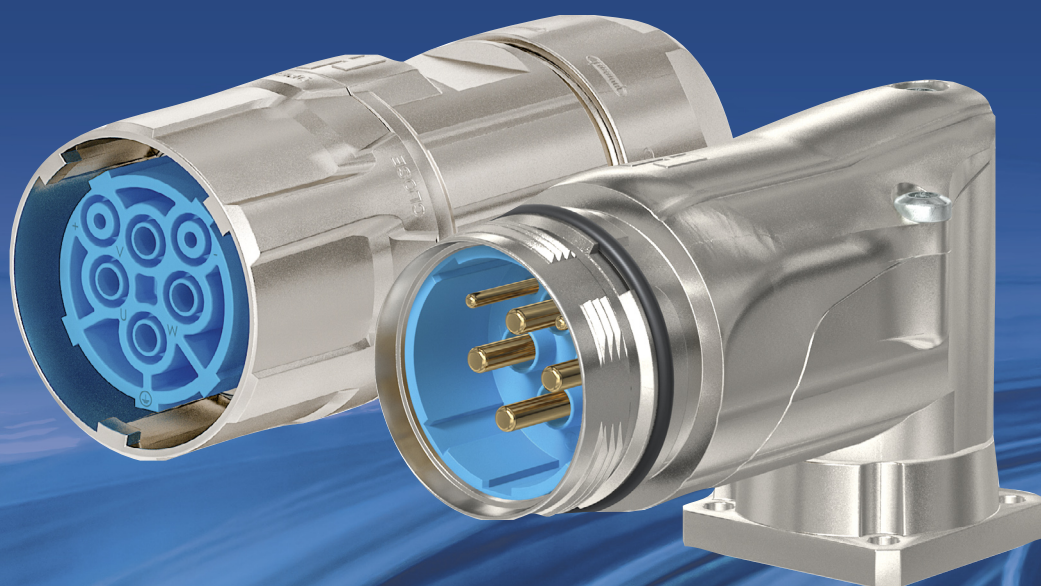


HUMMEL connectors may not be engaged or disengaged when live. To ensure the IP degree of protection (IP rating) and the necessary contact overlapping, the cable and coupling connectors must be fully engaged and locked.

M 40 POWER CONNECTORS (SIZE 1,5)

Connector series M 40 is suitable for high current and is preferably used for heavy drive application. The high-quality housing out of metal fulfills all requirements, that are present in a rough industrial environment. Furthermore, it convinces through a long operational lifetime.

- // suitable for requirements with high current
- // safe EMC protection
- // Screw lock or quick release fastener
- // TWILOCK-S: intermateable with SpeedTec



Product overview

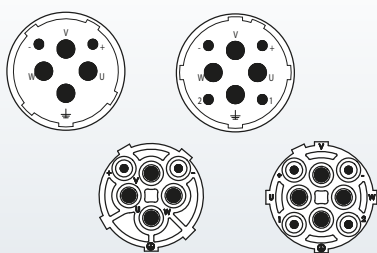
Housings with inserts

► 12



Inserts

► 16



Accessories

► 17



Mechanical Data	Materials and Technical Data
Housing	Copper-Zinc alloy Die Cast
Housing surface	Nickel plated, other surface upon request
Inserts (for contacts)	Thermoplastic Polyamid PA 6 (Nylon 6/6), PBT Fire protection class V-0
Contacts	Brass Alloy
Contact surface at point of contact	Nickel and gold plated (0,25 µm)
Minimum mating cycles	> 500
Seals / O-Rings	Buna-N standard optional Viton® (FKM / FPM) (Viton is a registered trademark of DuPont)
Temperature range	-40 °C – 125 °C (-40 °F – 257 °F)
Type of contacts	Crimp
Protection	IP 67 / IP 69K per EN 60 529 (connected)
Cable diameter range	13 – 28 mm (.51" – 1.10")



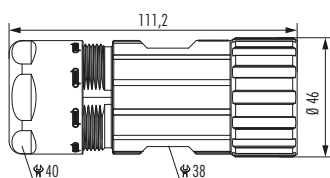
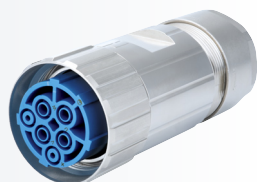
Standard delivery of M 40 (size 1,5) Power Connector include Contact Insert.

Electrical Data	2 + 3 + PE		4 + 3 + PE	
Number of positions	2	4	4	4
Number of contacts	2	3,6	2	3,6
Contact-Ø [mm]	2	3,6	2	3,6
Nominal current ¹⁾ [A]	28	55	28	55
Nominal voltage ²⁾ [V~] degree of pollution 3 ³⁾	300	600	300	600
Test voltage (Breakdown voltage) ⁴⁾ [V~]	2500	4000	2500	4000
Insulation resistance [Ω]	> 10 ¹³		> 10 ¹³	
Max. contact resistance [mΩ]	3	1	3	1

^{1), 2), 3), 4)} See Technical Information page 18

Housings with inserts

Straight Connector, Female Thread



Cable-Ø

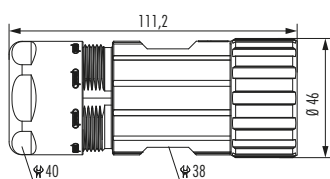
Part Number

2 + 3 + PE, insert for sockets

13 – 18 mm (.51 – .71")	7.710.623.000
17 – 24 mm (.67 – .97")	7.710.723.000
21 – 28 mm (.83 – 1.10")	7.710.823.000



Straight Connector, Female Thread



Cable-Ø

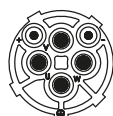
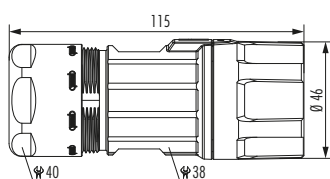
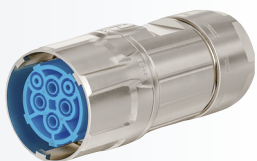
Part Number

4 + 3 + PE, insert for sockets

13 – 18 mm (.51 – .71")	7.710.643.000
17 – 24 mm (.67 – .97")	7.710.743.000
21 – 28 mm (.83 – 1.10")	7.710.843.000



Straight Connector, Female Thread TWILOCK-S*



Cable-Ø

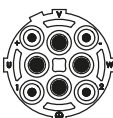
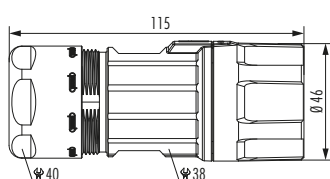
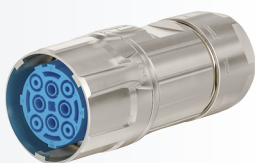
Part Number

2 + 3 + PE, insert for sockets

13 – 18 mm (.51 – .71")	7.716.623.00S
17 – 24 mm (.67 – .97")	7.716.723.00S
21 – 28 mm (.83 – 1.10")	7.716.823.00S



Straight Connector, Female Thread TWILOCK-S*



Cable-Ø

Part Number

4 + 3 + PE, insert for sockets

13 – 18 mm (.51 – .71")	7.716.643.00S
17 – 24 mm (.67 – .97")	7.716.743.00S
21 – 28 mm (.83 – 1.10")	7.716.843.00S



* intermateable with SpeedTec

¹ No compatibility with TWILOCK

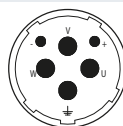
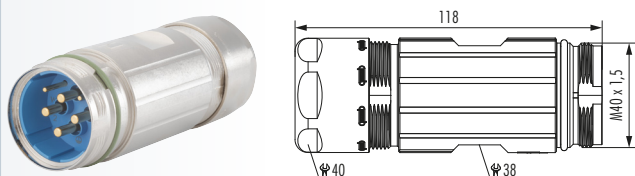
Straight Connector, Male Thread TWILOCK-S*

Cable-Ø

Part Number

2 + 3 + PE, insert for pins

13 – 18 mm	7.720.623.00S
17 – 24 mm	7.720.723.00S
21 – 28 mm	7.720.823.00S



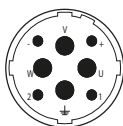
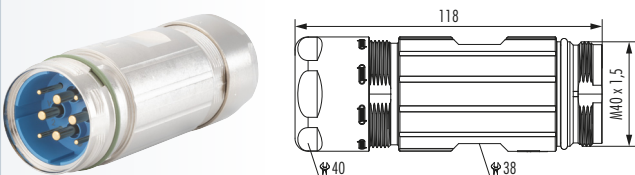
Straight Connector, Male Thread TWILOCK-S*

Cable-Ø

Part Number

4 + 3 + PE, insert for pins

13 – 18 mm	7.720.643.00S
17 – 24 mm	7.720.743.00S
21 – 28 mm	7.720.843.00S



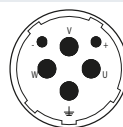
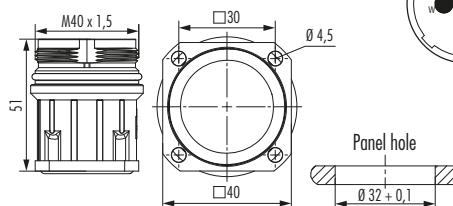
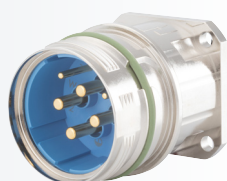
Panel Connector, Male Thread, Front Mounting TWILOCK-S*

Type

Part Number

2 + 3 + PE, insert for pins

4 x Bohr. 4,5 mm	7.740.023.00S
------------------	---------------



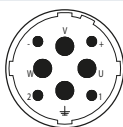
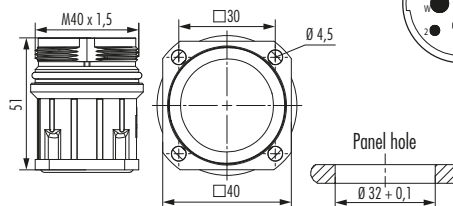
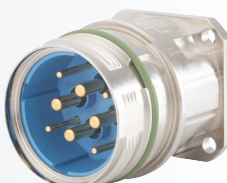
Panel Connector, Male Thread, Front Mounting TWILOCK-S*

Type

Part Number

4 + 3 + PE, insert for pins

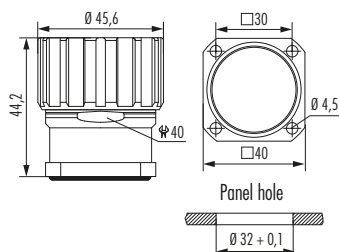
4 x Bohr. 4,5 mm	7.740.043.00S
------------------	---------------



* intermateable with SpeedTec

Housings with Inserts

Panel Connector with knurled Nut, Front Mounting



Type

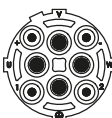
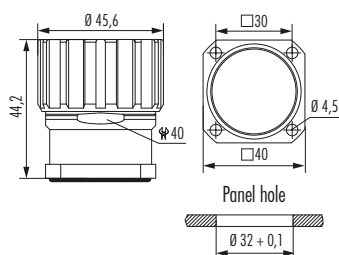
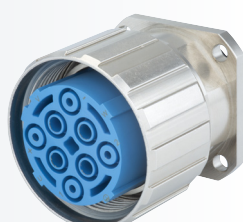
2 + 3 + PE, insert for sockets
4 holes Ø 4,5 mm (.18")

Part Number

7.744.023.000



Panel Connector with knurled Nut, Front Mounting



Type

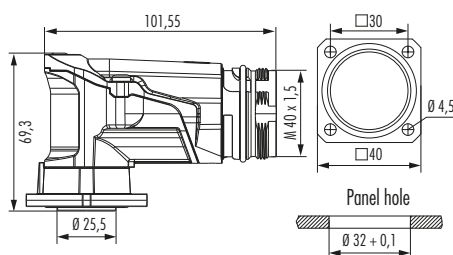
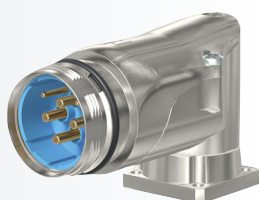
4 + 3 + PE, insert for sockets
4 holes Ø 4,5 mm (.18")

Part Number

7.744.043.000



Right Angle Panel Connector, Male Thread, rotatable TWILOCK-S*

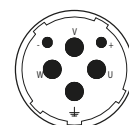


Type

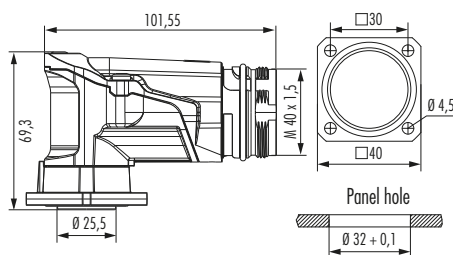
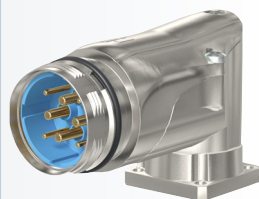
2 + 3 + PE, insert for pins
4 holes Ø 4,5 mm (.18")

Part Number

7.749.023.005



Right Angle Panel Connector, Male Thread, rotatable TWILOCK-S*

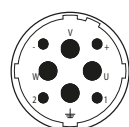


Type

4 + 3 + PE, insert for pins
4 holes Ø 4,5 mm (.18")

Part Number

7.749.043.005



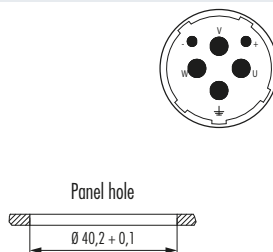
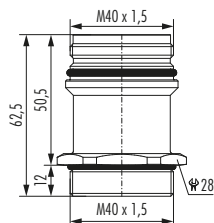
* interchangeable with SpeedTec

Panel Connector, Male Thread, Single Hole Mounting

Type

Part Number

Front mounting, 2 + 3 + PE, insert for pins
Thread M 40 x 1,57.742.023.000

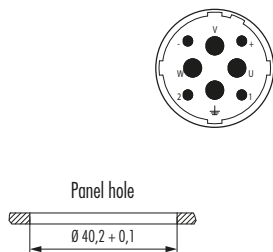
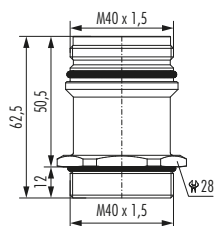


Panel Connector, Male Thread, Single Hole Mounting

Type

Part Number

Front mounting, 4 + 3 + PE, insert for pins
Thread M 40 x 1,57.742.043.000






Inserts

[illegible]

Contacts	Type	Crimp Range	Part Number
	Crimp pin 2 mm, machined	0,25 – 1 mm ² (AWG 24 – 17)	7.015.952.003
	Crimp pin 2 mm, machined	1 – 4 mm ² (AWG 17 – 12)	7.015.952.001
	Crimp socket 2 mm, machined	0,25 – 1 mm ² (AWG 24 – 17)	7.015.952.004
	Crimp socket 2 mm, machined	1 – 4 mm ² (AWG 17 – 12)	7.015.952.002
	Crimp pin 3,6 mm, machined	1,5 – 4 mm ² (AWG 16 – 12)	7.015.953.601
	Crimp socket 3,6 mm, machined	1,5 – 4 mm ² (AWG 16 – 12)	7.015.953.602
	Crimp pin 3,6 mm, machined	6 mm ² (AWG 10)	7.015.953.611
	Crimp socket 3,6 mm, machined	6 mm ² (AWG 10)	7.015.953.612
	Crimp pin 3,6 mm, machined	AWG 8	7.015.953.621
	Crimp pin 3,6 mm, machined	10 mm ²	7.015.953.623
	Crimp socket 3,6 mm, machined	AWG 8	7.015.953.622
	Crimp socket 3,6 mm, machined	10 mm ²	7.015.953.624
	Crimp pin 3,6 mm, machined	16 mm ² (AWG 6)	7.015.953.631
	Crimp socket 3,6 mm, machined	16 mm ² (AWG 6)	7.015.953.632

Contacts

Accessories	Type	Part Number
	Plastic protective cap for connectors with female thread	7.000.900.152
	Plastic protective cap for connectors with male thread	7.000.900.151
	Brass protective cap for connectors with female thread	7.015.900.103 ¹
	Brass protective cap for connectors with male thread	7.015.900.102
	Brass protective cap with rope for connectors with female thread	7.015.9S1.003 ¹
	Brass protective cap with rope for connectors with male thread	7.015.9S1.002
	Adaptor flange for Straight Connectors	7.010.900.129 ¹

¹ No compatibility with TWILOCK

Accessories	Type	Part Number
	Adapter for Conduit Fittings	
	Poleon DN 23.....	7.010.900.215
	Poleon DN 29.....	7.010.900.217
	Manual crimp tool	
	machined crimp contacts until 10 mm ² (AWG 8) for power connectors	
	battery pack crimp tool for connectors M 40 (European market only)	7.000.900.920
	crimping unit for crimp tool	7.000.900.919
	locator for 2 mm contacts battery pack crimp tool	7.010.900.156
	locator for 3,6 mm contacts at crimp tool	7.010.900.153
	assembly instructions online: www.hummel.com	
	Crimp tool for manual crimping	
	of machined crimp contacts 16 mm ² (AWG 6)	7.000.900.903



M 40 POWER (SIZE 1,5)

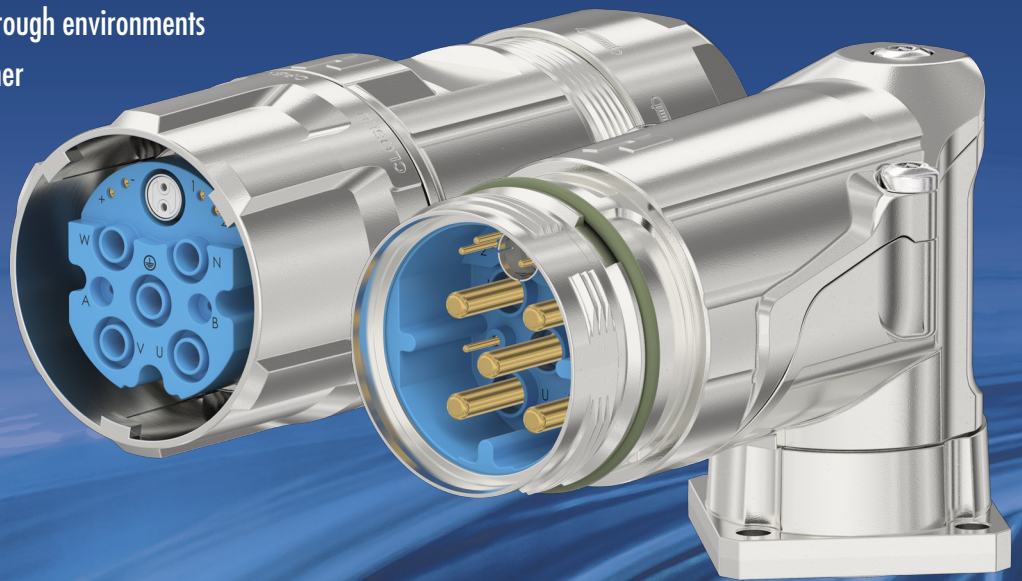


M 40 POWER CONNECTORS (SIZE 1,5) HYBRID

The M 40 Hybrid combines the power of the standard series with the versatility of a hybrid connector. This circular connector transmits power up to 55 A and parallel data rates up to 100 Mbit/s.

A special feature are the high electrical characteristics of the signal contacts A/B. They enable users in servo technology to achieve transmission rates of up to 300 V/7 A for brakes.

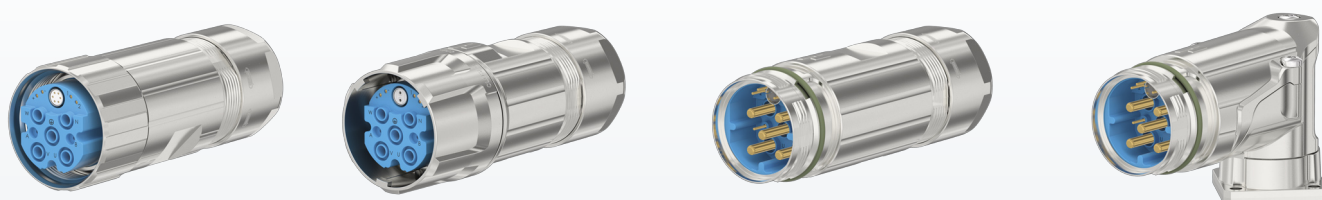
- // compact and robust design
- // absolute industrial suitability for rough environments
- // Screw lock or quick release fastener



Product overview

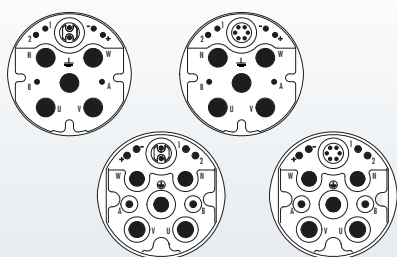
Housings with inserts

► 24



Inserts

► 25



Accessories

► 27



Mechanical Data

Housing	Copper-Zinc alloy Die Cast
Housing surface	Nickel plated, other surface upon request
Inserts (for contacts)	Thermoplastic Polyamid PA 6 (Nylon 6/6), PBT Fire protection class V-0
Contacts	Brass Alloy
Contact surface at point of contact	Nickel and gold plated (0,25 µm)
Minimum mating cycles	> 500
Seals / O-Rings	Buna-N standard optional Viton® (FKM / FPM) (Viton is a registered trademark of DuPont)
Temperature range	-40 °C – 125 °C (-40 °F – 257 °F)
Type of contacts	Crimp
Protection	IP 67 / IP 69K per EN 60 529 (connected)
Cable diameter range	13 – 28 mm (.51" – 1.10")



Standard delivery of M 40 / M 40 HYBRID (size 1,5) Power Connector include Contact Insert.

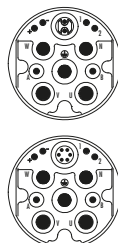
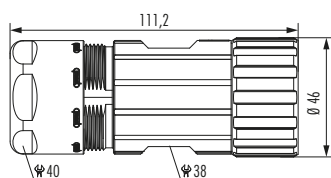
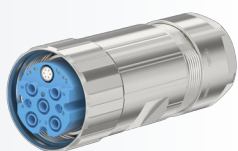
Electrical Data M 40 HYBRID

	Power	Signal	Ethernet
Number of positions	4 + PE	4 + 2	2 / 6
Number of contacts	4 + PE	4 + 2	2 / 6
Contact-Ø [mm]	3,6 mm	1 mm	1 / 0,6 mm
AWG [mm ²]	1,5 – 10 mm ²	0,14 – 1,5 mm ²	0,14 – 1,5 / 0,05 – 0,34 mm ²
Nominal current ¹⁾ [A]	55	7	2 / 1,2
Nominal voltage ²⁾ [V~] degree of pollution 3 ³⁾	630 AC, 850 DC	150 / 300	30
Test voltage (Breakdown voltage) ⁴⁾ [V~]	4000	500 / 1500	500
Data transfer	–	–	Cat5e / Cat5
Insulation resistance [Ω]	> 10 ¹³	> 10 ¹³	> 10 ¹³
Max. contact resistance [mΩ]	3 1	3 1	3 1

^{1), 2), 3), 4)} See Technical Information page 8

Housings with inserts

Straight Connector, Female Thread



Cable-Ø

Part Number

2 + 6 + 4 + PE, insert for sockets

13 – 18 mm (.51 – .71")	7.710.662.000
17 – 24 mm (.67 – .97")	7.710.666.000
21 – 28 mm (.83 – 1.10")	7.710.862.000

6 + 6 + 4 + PE, insert for sockets

13 – 18 mm (.51 – .71")	7.710.762.000
17 – 24 mm (.67 – .97")	7.710.766.000
21 – 28 mm (.83 – 1.10")	7.710.866.000

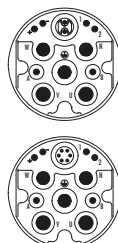
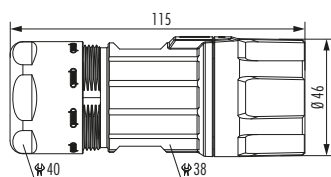
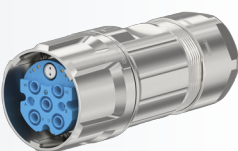


▶ 26



▶ 27

Straight Connector, Female Thread TWILOCK-S*



Cable-Ø

Part Number

2 + 6 + 4 + PE, insert for sockets

13 – 18 mm (.51 – .71")	7.716.662.00S
17 – 24 mm (.67 – .97")	7.716.762.00S
21 – 28 mm (.83 – 1.10")	7.716.862.00S

6 + 6 + 4 + PE, insert for sockets

13 – 18 mm (.51 – .71")	7.716.666.00S
17 – 24 mm (.67 – .97")	7.716.766.00S
21 – 28 mm (.83 – 1.10")	7.716.866.00S

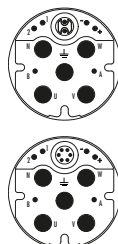
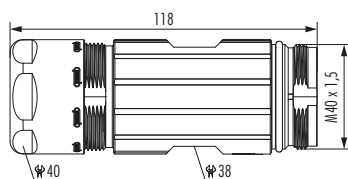
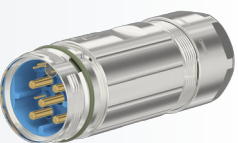


▶ 26



▶ 27

Straight Connector, Male Thread TWILOCK-S**



Cable-Ø

Part Number

2 + 6 + 4 + PE, insert for pins

13 – 18 mm (.51 – .71")	7.720.662.00S
17 – 24 mm (.67 – .97")	7.720.762.00S
21 – 28 mm	7.720.862.00S

6 + 6 + 4 + PE, insert for pins

13 – 18 mm (.51 – .71")	7.720.666.00S
17 – 24 mm (.67 – .97")	7.720.766.00S
21 – 28 mm (.83 – 1.10")	7.720.866.00S

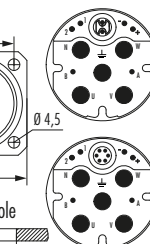
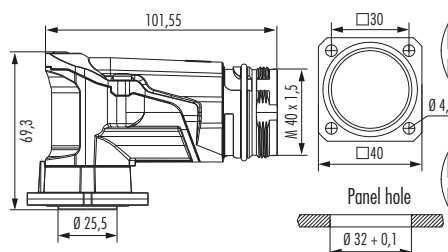


▶ 26



▶ 27

Right Angle Panel Connector, Male Thread, rotatable TWILOCK-S**



Type

Part Number

2 + 6 + 4 + PE, insert for pins

13 – 18 mm (.51 – .71")	7.749.062.00S
-------------------------	---------------

6 + 6 + 4 + PE, insert for pins

13 – 18 mm (.51 – .71")	7.749.066.00S
-------------------------	---------------



▶ 26



▶ 27

* intermateable with SpeedTec

** intermateable with HUMMEL, through 2 additional and powerful signal pins in HUMMEL specific contact arrangement



M 40 HYBRID (SIZE 1,5)

Inserts

Contact Arrangement, Mating View	Number of Poles	Required Contacts
	Insert for pins 2 + 6 + 4 + PE	8 x crimp pins 1 mm 5 x crimp pins 3,6 mm
	Insert for sockets 2 + 6 + 4 + PE	8 x crimp sockets 1 mm 5 x crimp sockets 3,6 mm
	Insert for pins 6 + 6 + 4 + PE	6 x crimp pins 0,6 mm 6 x crimp pins 1 mm 5 x crimp pins 3,6 mm
	Insert for sockets 6 + 6 + 4 + PE	6 x crimp sockets 0,6 mm 6 x crimp sockets 1 mm 5 x crimp sockets 3,6 mm

Standard delivery of M 40 Hybrid Power Connector include Contact insert.

Contacts	Type	Crimp Range	Part Number
	Crimp pin 0,6 mm, machined	0,05 – 0,34 mm ² (AWG 30 – 22)	7.010.960.611
	Crimp socket 0,6 mm, machined	0,05 – 0,34 mm ² (AWG 30 – 22)	7.010.960.612
	Crimp pin 1 mm, machined	0,14 – 1 mm ² (AWG 26 – 18)	7.015.961.001
	Crimp pin 1 mm, machined	0,75 – 1,5 mm ² (AWG 20 – 16)	7.015.961.011
	Crimp socket 1 mm, machined	0,14 – 1 mm ² (AWG 26 – 18)	7.015.961.002
	Crimp socket 1 mm, machined	0,75 – 1,5 mm ² (AWG 20 – 16)	7.015.961.012
	Crimp pin 3,6 mm, machined	1,5 – 4 mm ² (AWG 16 – 12)	7.015.963.601
	Crimp pin 3,6 mm, machined	6 – 6 mm ² (AWG 10)	7.015.963.611
	Crimp pin 3,6 mm, machined	10 – 10 mm ² (AWG 8)	7.015.963.621
	Crimp pin 3,6 mm, machined	16 – 16 mm ² (AWG 6)	7.015.963.631
	Crimp socket 3,6 mm, machined	1,5 – 4 mm ² (AWG 16 – 12)	7.015.963.602
	Crimp socket 3,6 mm, machined	6 – 6 mm ² (AWG 10)	7.015.963.612
	Crimp socket 3,6 mm, machined	10 – 10 mm ² (AWG 8)	7.015.963.622
	Crimp socket 3,6 mm, machined	16 – 16 mm ² (AWG 6)	7.015.963.632



Accessories

Accessories	Type	Crimp Range	Part Number
	Adapter for Conduit Fittings		
	Poleon DN 23.....		7.010.900.215
	Poleon DN 29.....		7.010.900.217
	Crimp tool for manual crimping		
	machined crimp contacts until 10 mm ² (AWG 8) for power connectors		
	battery pack crimp tool for connectors M 40 (European market only)		7.000.900.920
	crimping unit for 2mm contacts battery pack crimp tool (7.015.952.003/7.015.952.004)		7.000.900.918
	locator for 2 mm contacts battery pack crimp tool		7.010.900.156
	assembly instructions online: www.hummel.com		
	Crimp tool for manual crimping		
	of machined crimp contacts 16 mm ² (AWG 6)		7.000.900.903
	Crimp tool for 0,6mm contacts and 1mm contacts Hybrid²		7.000.900.909
	locator for this crimp tool.....		7.010.900.158

Europe

HUMMEL France

HUMMEL CONNECTEURS SAS
ZI – Rue de l'Acqueline
51800 Sainte Ménéhould / France

Tel. +33 (0) 3 89 / 55 37 20
Fax +33 (0) 3 89 / 53 80 27
E-Mail info.fr@hummel.com
www.hummel.com

HUMMEL UK

HUMMEL UK Limited
Office 3, Momentum House
Enterprise Way, Lowton St Marys,
Warrington, Cheshire, WA3 2BP
United Kingdom

Tel. +44 (0) 19 42 / 60 56 95
Fax +44 (0) 19 42 / 26 93 24
E-Mail info.uk@hummel.com
www.hummel.com

HUMMEL Italy

HUMMEL S.r.l.
Via Enrico Fermi 61
10091 Alpignano (Torino) / Italy

Tel. +39 (0) 11 / 9 68 26 38
Fax +39 (0) 11 / 9 78 55 50
E-Mail info.it@hummel.com
www.hummel.com

HUMMEL Poland

HUMMEL Sales Office Poland
Al. 23 Stycznia 26 lok. 20
86-300 Grudziadz / Poland

Tel. +48 (0) 6 62 / 38 27 99
Fax +48 (0) 56 / 6 43 00 11
E-Mail info.pl@hummel.com
www.hummel.com

Asia

HUMMEL China

HUMMEL Connector Systems (Shanghai) Co., Ltd.
Room 1701 Central Plaza
No.227 Huang Pi (N) Road
200003 Shanghai / P.R. China

Tel. +86 (0) 21 / 63 75 85 51
Fax +86 (0) 21 / 63 75 85 53
E-Mail info.hcs.cn@hummel.com
www.hummel.com

HUMMEL India

HUMMEL Connector Systems Pvt. Ltd.
1211, Surya Kiran Building, 19,
Kasturba Gandhi Marg
110001 New Delhi / India

Tel. +91 (0) 11 / 43 00 75-21 / -23
Fax +91 (0) 11 / 43 00 75-22
E-Mail info.in@hummel.com
www.hummel.com

HUMMEL South Korea

HUMMEL AG KOREA
#1114-5, the First Tower 2, 614, Dongtan
Giheung-ro, Hwaseong-si, Gyeonggi-do
18469 Korea

Tel. +82 (0) 2 / 4 70 27 62
Fax +82 (0) 2 / 4 70 27 63
E-Mail info.kr@hummel.com
www.hummelkorea.com

South America

HUMMEL Brazil

HUMMEL Connector Systems Ltda.
Rua Derville Gabriel Pereira, 280
Barro Preto – Centro Empresarial Tatui I
CEP 18280-614 – Tatui / SP / Brazil

Tel. +55 (0) 15 / 33 22 70 00
Fax +55 (0) 15 / 33 22 70 26
E-Mail vendas@hummel.com.br
www.hummel.com.br

ELECTRIC COMPONENTS

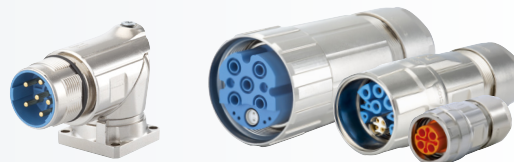
Cable Glands

Polyamide-, Brass- and Stainless steel,
EMC-connections, Protection Ex e, Ex d, Ex ta



Circular Connectors

M 12 Power to M 40, INOX, TWILOCK, Industrial Ethernet,
Power, Signal, Hybrid-Connector, Moulded Cordsets



www.hummel.com

HUMMEL AG
Lise-Meitner-Straße 2
79211 Denzlingen
Germany
www.hummel.com

Tel. +49 (0) 76 66 / 9 11 10-0
Fax +49 (0) 76 66 / 9 11 10-20
E-Mail info@hummel.com

